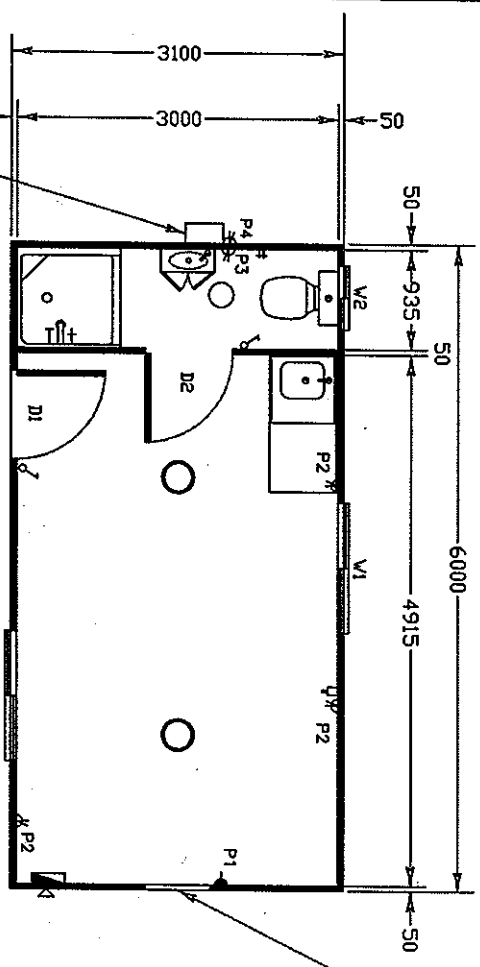


WINDOWS		DOORS		POWER CIRCUITS	
CODE	SIZE	TYPE	HARDWARE	ABOVE F.F.L.	AMPS.
W1	1200x1200	SLIDING GLASS WINDOW	— LOCK SET	P1	1800
W2	600x600	SLIDING GLASS WINDOW, P/V, OBSC.	— PRIVACY SET	P2	1000
				P3	1500
				P4	300
D1	2040x820	TIMBER DOOR WITH GLASS INSERTS			10
D2	2040x820	TIMBER DOOR			10

GENERAL LEGEND	
	— SINGLE LIGHT SWITCH
	— DOUBLE 10amp G.P.O.
	— SINGLE 10amp G.P.O.
	— FLUORESCENT LIGHT (DIFFUSED FITTING)
	EXTERNAL POWER SUPPLY, POINT OF ENTRY AND INTERNAL SWITCHBOARD.
	— TV POINT WITH ANTENNA CABLING



FLOOR PLAN

INSTANTANEOUS GAS HWS

FRAMED OPENING FOR CLIENTS A/C UNIT (395x605 CLEAR OPENING SIZE)

